

MS-0401E

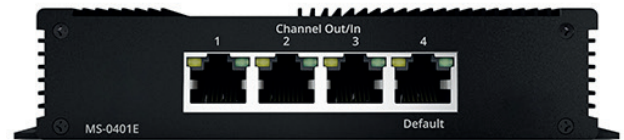
4-way HDBaseT / IP Gateway with LAN Control

M Solutions



Description:

The MSolutions 4-way HDBaseT / IP Gateway is a small form-factor unit with 5 x HDBaseT / IP ports, offering an efficient HDBaseT / IP switching platform. The unit is designed to offer two differing types of HDBaseT / IP switching, allowing for up to 4 x HDBaseT source devices (Transmitters) or IP Hosts to be linked through the MSolutions Gateway to a single HDBaseT / IP output, or for a single HDBaseT / IP input to be independently switched to the 4x HDBaseT / IP outputs. The unit can be used with any manufacturers compatible HDBaseT transmitter and receiver equipment to provide extra connectivity to larger distribution systems, or for separation of multiple units via LAN, to provide a simple, yet cost-effective switching solution.

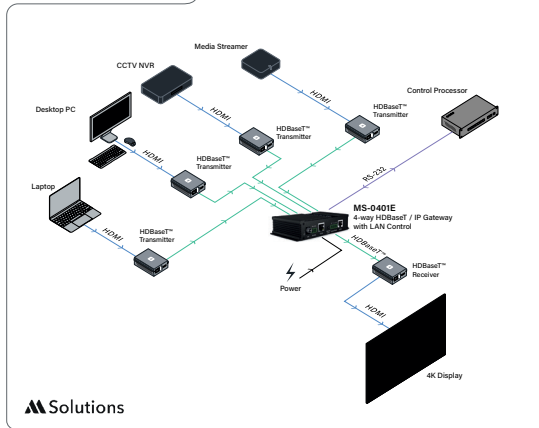


UK: +44 (0)115 824 0296
EU: +34 911 232 072
USA (Toll Free): +1 888 3458995
Israel: +972 3 7207710
sales@m4sol.com

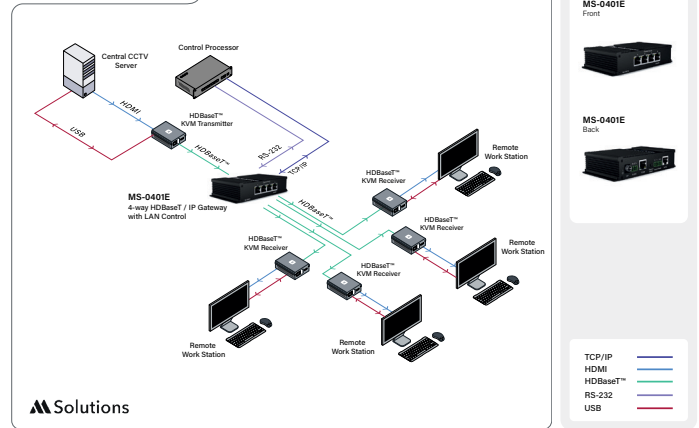
M Solutions

From ideas to reality.

MS-0401E Schematic



MS-0401E Schematic



Key Features:

- Inline switching of HDBaseT Transmitters or Receivers: 1 x input to 4 x selectable outputs, or, 4 x independent inputs to 1 x output
- Dynamic routing of LAN connections (outside of HDBaseT spec)
- Interoperability with all HDBaseT manufacturers equipment
- Distances of manufacturers HDBaseT equipment maintained with switch inline
- Support for all HDBaseT specifications up to HDBaseT Spec 3.0 including video, audio, ARC (audio return), control and Ethernet (based on spec of individual TX or RX attached)
- Transparent to HDCP content being sent via HDBaseT - pass-through is based on the specification of the HDBaseT transmitter and receiver modules attached
- Supports pass-through of all HDBaseT power formats: PoE, PoH, PoC up to 100W
- Switching control via IP, serial / RS-232/ local switch
- Internal galvanic separation of inputs / outputs to ensure disconnect when ports are not in use
- Connection for local switching for panel unit
- On board channel select

Specifications:

- RJ45 connectivity (HDBaseT or LAN): 5x RJ45 - 1:4 or 4:1C46
- Control connectivity: 1x LAN (RJ45), 1x 3-pin phoenix connector, block included
- Control Panel connectivity: 1x 5-pin phoenix connector, block included
- Power supply: 12V 2A DC
- Power consumption: 6W
- Individual unit dimensions (W x D x H): 123 x 74 x 30mm
- Individual unit weight: 0.2Kg
- Package dimensions (W x D x H): 160mm x 130mm x 75mm
- Package weight: 0.9kg
- Master carton quantity: 18
- Master carton dimensions (W x D x H): 540 x 270 x 260mm
- Master carton weight: 16kg
- Operating temperature: 32°F to 119°F (0°C to 48°C)
- Storage temperature: -4°F to 140°F (-20°C to 60°C)
- Operating humidity: 10-90% non condensing



UK: +44 (0)115 824 0296
 EU: +34 911 232 072
 USA (Toll Free): +1 888 3458995
 Israel: +972 3 7207710
sales@m4sol.com

Solutions
 From ideas to reality.